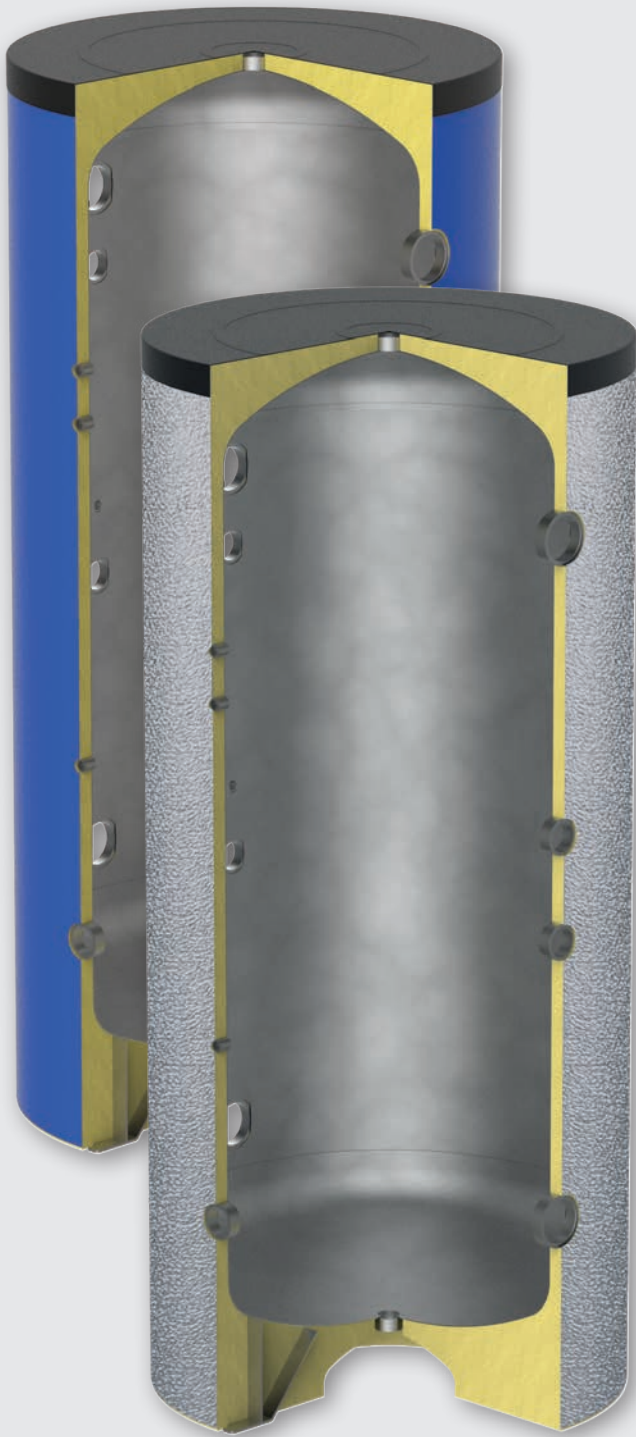


Cold Water Storage Tanks
VKG-HC, VKGE-HC serie
(Hot & Cold)



info

Cold Water Storage Tanks

VKG-HC, VKGE-HC series (Hot & Cold)

The VKG-HC series contains insulated tanks for "HOT & COLD" applications, which are usually used to increase thermal inertia of the device. Suitable for heat pumps to avoid compressor/generator restarts. VKG-HC have two additional couplings dedicated for an optional additional source.

Material: carbon steel

External covering

Model	Type	Usage	
VKG-HC	coloured PVC	indoor	1
VKGE-HC	embossed aluminium sheet	outdoor	2

Insulation

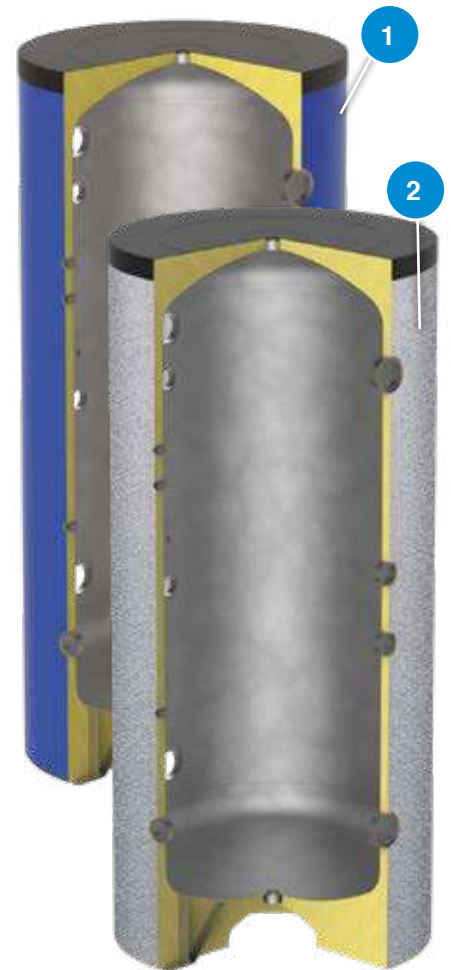
Capacity (l)	Type
from 100 to 1000	High density rigid polyurethane foam
from 1500	Closed cell polyethylene foam + Polyester Fiber

Operational limits

Min temperature	Max temperature	Max pressure
-10 °C	90 °C	6 bar

 **Standard Accessories:** see pag. 128

 **Special versions:** see pag. 129



TESTED

Capacity l	VKG-HC vertical, coloured PVC		VKGE-HC vertical, embossed al. sheet		Energy label	With packaging, vertical	
	Code	Price	Code	Price		Dimensions cm	Weight kg
100	817010084X		817010168H8X		B	49x49x107	25
200	817010085X		817010169H8X		C	54x54x146,1	36
300	817010086X		817010170H8X		B	64x64x180	48
500	817010087X		817010171H8X		C	74x74x184,1	80
750	817010214X		817010214H8X		C	95x95x178	106
1000	817010089X		817010173H8X		C	105x105x209	130
1500	817010090X				C	130X130X238	218
2000	817010091X				C	140X140X270	260
2500	817010177X					150X150X249	293
3000	817010178X					150X150X299	340
4000	817010179X					170X170X306	490
5000	817010180X					190X190X310	580

Cold Water Storage Tanks: Dimensions

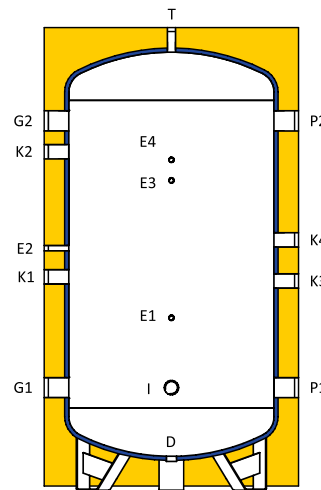
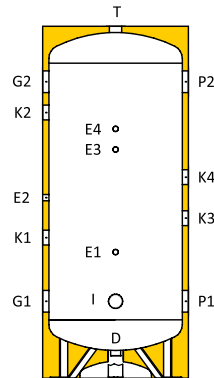
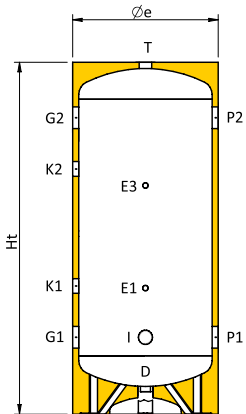
VKG-HC, VKGE-HC series

100 ≤ cap. ≤ 200

300 ≤ cap. ≤ 1.000

1.500 ≤ cap. ≤ 5.000

Couplings legend



D	Drain
E1	Probe / Thermometer
E2	Probe / Thermometer
E3	Probe / Thermometer
E4	Probe / Thermometer
G1	From plant
G2	To plant
I	Electrical resistor
K1	Auxiliary
K2	Auxiliary
K3	Auxiliary
K4	Auxiliary
P1	To energy source
P2	From energy source
T	Vent

Couplings chart

Cap. l	D inch	E1 inch	E2 inch	E3 inch	E4 inch	G1 inch	G2 inch	I inch	K1 inch	K2 inch	K3 inch	K4 inch	P1 inch	P2 inch	T inch
100	1 1/4	1/2"	-	1/2"	-	1 1/2	1 1/2	2'	1 1/2	1 1/2	-	-	1 1/2	1 1/2	1 1/4
200	1 1/4	1/2"	-	1/2"	-	1 1/2	1 1/2	2'	1 1/2	1 1/2	-	-	1 1/2	1 1/2	1 1/4
300	1 1/4	1/2"	1/2"	1/2"	1/2"	2'	2'	2'	1 1/2	1 1/2	1 1/2	1 1/2	2'	2'	1 1/4
500	1 1/4	1/2"	1/2"	1/2"	1/2"	3'	3'	2'	2'	2'	2'	2'	3'	3'	1 1/4
750	1 1/2	1/2"	1/2"	1/2"	1/2"	3'	3'	2'	2'	2'	2'	2'	3'	3'	1 1/2
1000	1 1/2	1/2"	1/2"	1/2"	1/2"	3'	3'	2'	2'	2'	2'	2'	3'	3'	1 1/2
1500	2'	1/2"	1/2"	1/2"	1/2"	3'	3'	2'	2'	2'	2'	2'	3'	3'	2'
2000	2'	1/2"	1/2"	1/2"	1/2"	3'	3'	2'	2'	2'	2'	2'	3'	3'	2'
2500	2'	1/2"	1/2"	1/2"	1/2"	4'	4'	2'	2'	2'	2'	2'	4'	4'	2'
3000	2'	1/2"	1/2"	1/2"	1/2"	4'	4'	2'	2'	2'	2'	2'	4'	4'	2'
4000	2'	1/2"	1/2"	1/2"	1/2"	4'	4'	2'	2'	2'	2'	2'	4'	4'	2'
5000	2'	1/2"	1/2"	1/2"	1/2"	4'	4'	2'	2'	2'	2'	2'	4'	4'	2'

Size chart

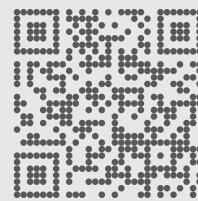
Cap. l	Øe mm	Ht mm	R* mm	D mm	E1 mm	E2 mm	E3 mm	E4 mm	G1 mm	G2 mm	I mm	K1 mm	K2 mm	K3 mm	K4 mm	P1 mm	P2 mm
100	460	950	1060	125	395	-	655	-	285	765	285	445	605	-	-	285	765
200	510	1335	1430	125	520	-	920	-	320	1120	320	580	850	-	-	320	1120
300	610	1680	1790	130	555	895	1055	1155	355	1405	355	645	1255	780	980	355	1405
500	760	1735	1895	140	620	885	1120	1220	380	1450	380	690	1300	785	985	380	1450
750	910	1765	1990	125	685	885	1145	1245	395	1445	395	685	1295	820	1020	395	1445
1000	1010	2075	2310	125	755	1095	1405	1505	415	1715	415	955	1565	955	1155	415	1715
1500	1220	2245	2560	165	840	1180	1510	1610	500	1800	500	1040	1650	1020	1220	500	1800
2000	1320	2565	2885	155	885	1450	1815	1915	505	2105	505	1345	1955	1180	1380	505	2105
2500	1470	2360	2785	180	1015	1255	1515	1665	565	1865	565	1005	1615	1115	1315	565	1865
3000	1470	2860	3220	180	1315	1755	1815	1965	565	2365	565	1505	2115	1365	1565	565	2365
4000	1620	2930	3350	160	1340	1780	1840	1990	590	2390	590	1530	2140	1390	1590	590	2390
5000	1820	2970	3485	140	1350	1790	1850	2000	600	2400	600	1540	2150	1400	1600	600	2400

R*: Reversal quota



Download additional content

 go.forinigroup.it/eng/content



fiorini

Fiorini Industries S.r.l.
Ph. +39 0543 723197 – Fax +39 0543 720413
Via Zampeschi 119 – 47122 Forlì (FC) – Italy
www.fiorini-industries.com