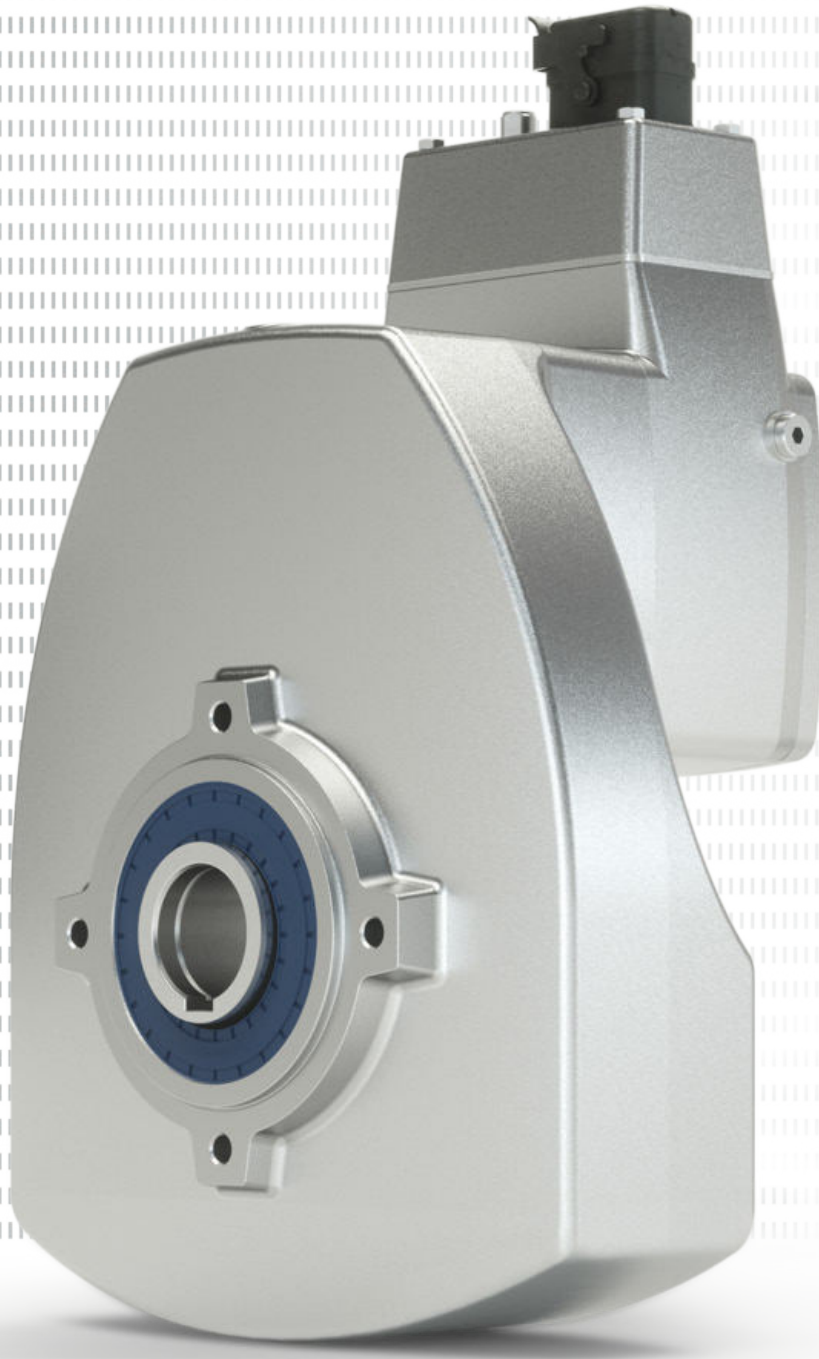


U.S. Availability
Q4 2021



DuoDrive with IE5+ energy efficiency

Two become one



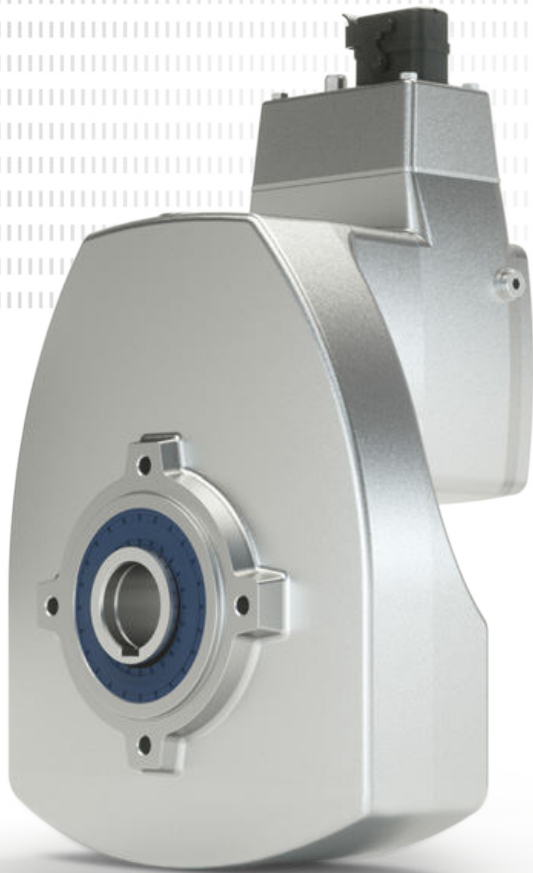
DuoDrive – integrated geared motor concept

Features

- ▶ Latest generation permanent magnet synchronous motor (PMSM) integrated into a single-stage helical gear unit housing
- ▶ Power range from 0.5 – 2 HP in a single frame size
- ▶ Output speed of up to 1000 rpm
- ▶ Optional nsd tupH™ Sealed Surface Conversion System and IP69K protection class
- ▶ Maximum output torque 700 lb-in
- ▶ Speed ratio of 3.24 – 16.2

The revolutionary DuoDrive with integrated IE5+ motor brings a new era of energy efficiency and easy system maintenance.

- ▶ Extremely high system efficiency of up to 92%
- ▶ Reduced Total Cost of Ownership and fast Return on Investment
- ▶ Variant reduction through constant motor torque over a wide speed range
- ▶ Compact wash-down design for easy installation and optimized space utilization
- ▶ Industry-standard mounting dimensions
- ▶ Quiet operation



The perfect system solution

- ▶ Versatile mounting options: B5 flange, B14 flange, Torque arm
- ▶ Keyed hollow bore or keyless bore options – GRIPMAXX™ or shrink disc
- ▶ Wide variety of motor connectivity options such as HANQ8 / HAN10E plug connectors, round connectors, or directly wired
- ▶ Optional integrated encoder
- ▶ Optional integrated mechanical brake

nsd tupH Sealed Surface Conversion System

NORD geared motors with nsd tupH are the optimal choice for use in challenging environmental conditions.

- ▶ Easy to clean surfaces
- ▶ Resistant to acids and alkalis (wide pH range)
- ▶ No spreading of corrosion, even if damaged
- ▶ No flaking
- ▶ Corrosion-resistant – no contact corrosion
- ▶ Conforms to FDA Title 21 CFR 175.300
- ▶ Free from chromates

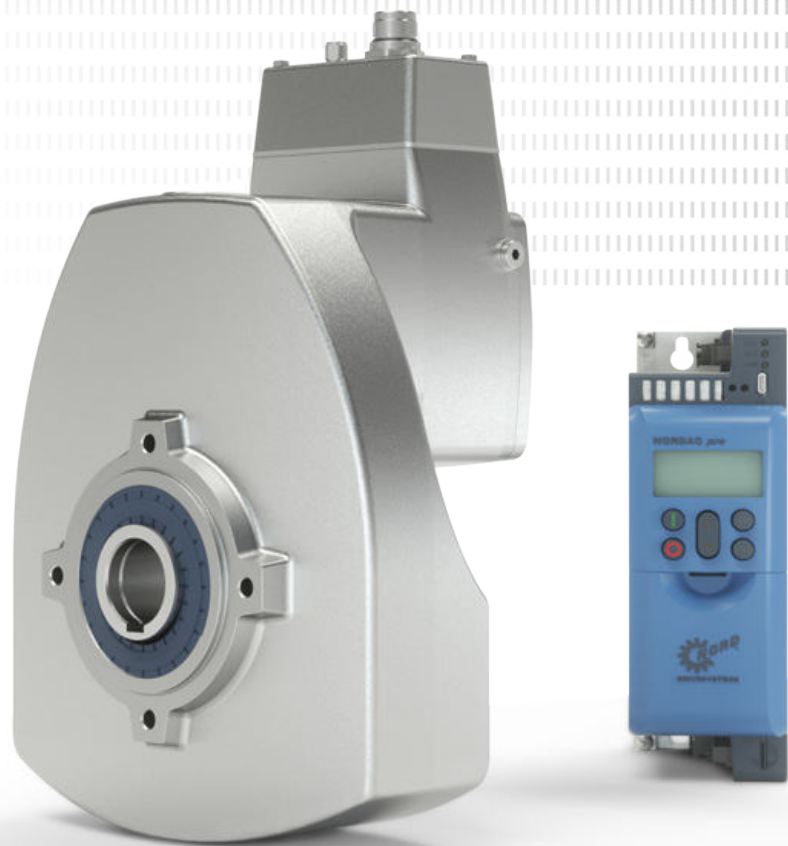
The complete solution for extreme conditions

- ▶ Surface-treated housing components
- ▶ DIN and standard components made from stainless steel
- ▶ Wash-down housing (gear unit and motor)
- ▶ Stainless steel shafts
- ▶ Special radial shaft seals
- ▶ Food-compatible oil

Variant reduction

By reducing the number of variants, it is possible to minimize administrative expenses and set up leaner manufacturing, logistics, storage, and service processes. The new generation of IE5+ motors combines the benefits of NORD's modular system with the possibility of reducing system variants. This solution is tailored to each customer and features the following advantages:

- ▶ Motor can be operated worldwide
- ▶ High system overload capacity
- ▶ Large speed range at constant motor torque
- ▶ Explicitly tailored to the individual load range
- ▶ Minimal space requirements paired with high power density
- ▶ Reduced spare part inventory

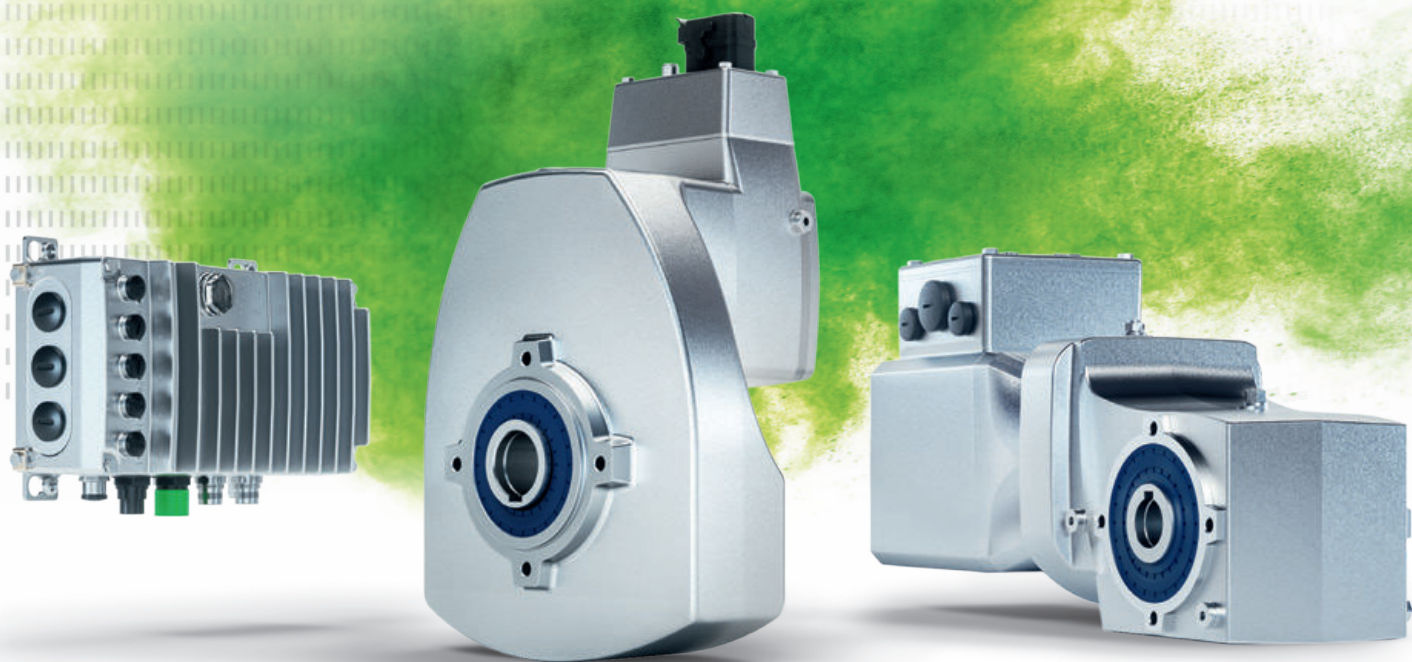


INNOVATIVE, EFFICIENT SOLUTIONS FOR ALL-AROUND COMPATIBILITY.

Innovative, compatible, future-ready:
DuoDrive*, IE5+, and NORDAC ON**.

*US availability Q4 2021

**US availability Q1 2022



For more information:



S9012 -
IE5+ Motors



TI 60-0001
IE4/IE5 Motors

www.nord.com

NORD Gear Corporation - US

Waukegan, WI
800 NORD Drive
Waukegan, WI 53597
Tel. 888.314.6673
info.us@nord.com

Corona, CA
1180 Railroad St.
Corona, CA 92882
Tel. 888.314.6673
info.us@nord.com

Charlotte, NC
300E Forsyth Hall Dr.
Charlotte, NC 28273
Tel. 888.314.6673
info.us@nord.com

NORD Gear Limited - Canada

Brampton, ON
41 West Drive
Brampton, ON L6T4A1
Tel. 800.668.4378
info.ca@nord.com

NORD DRIVE SYSTEMS SA DE CV

Queretaro, Mexico
Av. Industria Textil B.6
Parque Industrial PYME, Huimilpan
QRO - Mexico 76950
Tel. 52 442 688 7110
info.mx@nord.com