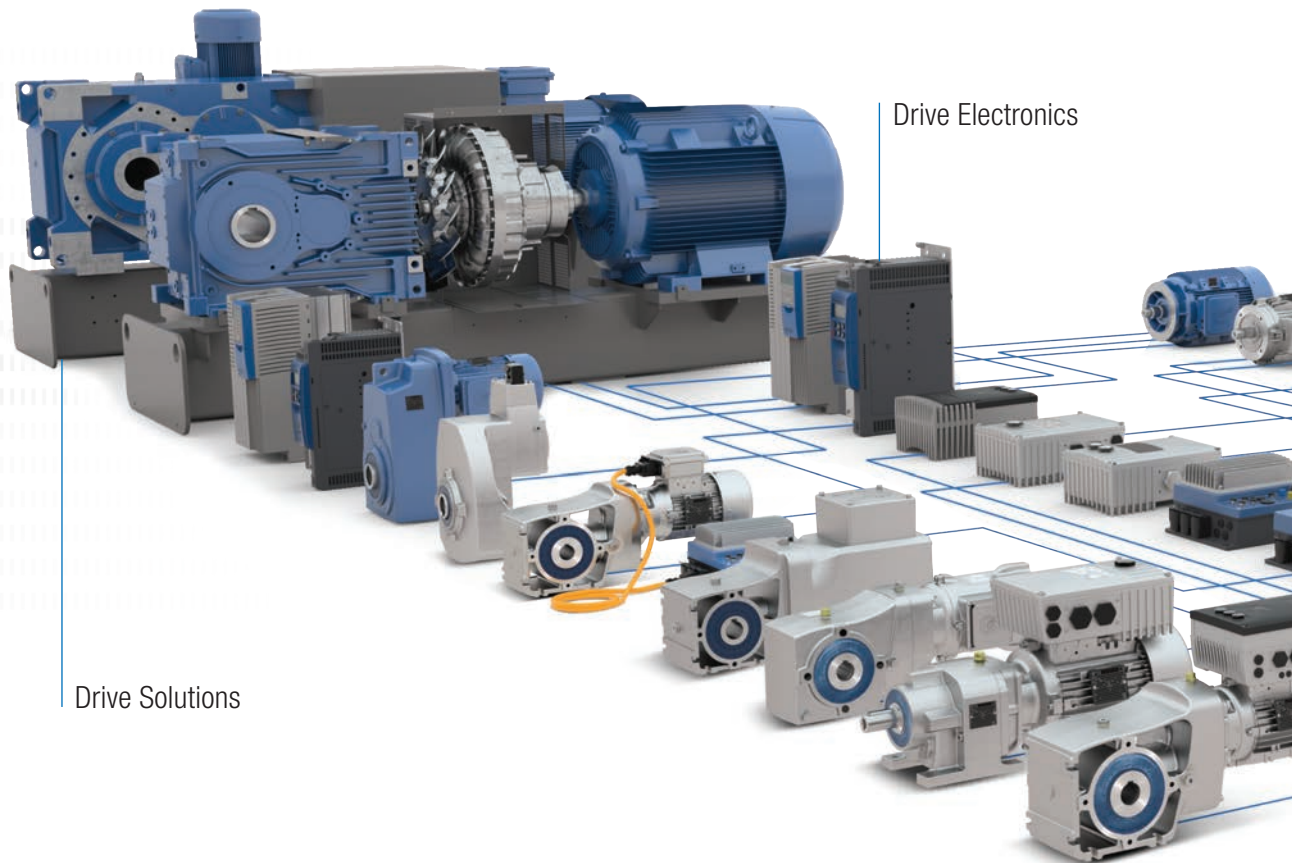


Complete drive solutions from a single source



Drive Solutions

Drive Electronics



Reliable gear units with one-piece UNICASE™ housing can cater to any load.

- ▶ High power density
- ▶ Long service life
- ▶ High axial and radial load capacity



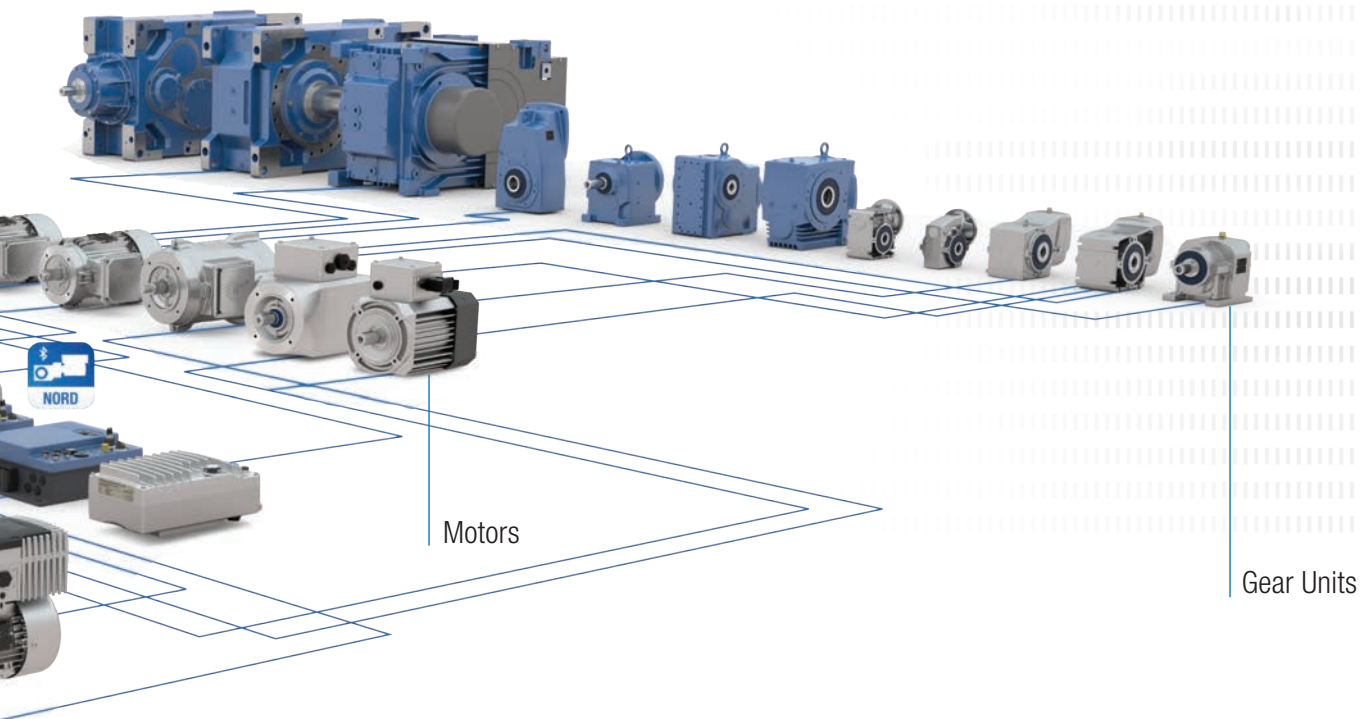
Powerful motors up to IE5+ efficiency keep drive systems in motion in all operating situations.

- ▶ Designed in compliance with international standards
- ▶ High overload capacity
- ▶ Energy-efficient



Intelligent drive electronics provide the exact control options you need.

- ▶ Scalable functions
- ▶ Full field bus connection facilities
- ▶ Wide power range
- ▶ Integrated PLC at no extra cost



Specialized drive solutions can be created using the modular NORD system consisting of a gear unit, motor, and drive electronics. Each of the variants combine the highest product quality, short planning and assembly times, short lead times, and a good price-to-performance ratio.



Extensive communication options enable access to drives from all levels to enable a wide variety of setting options.

- ▶ Compatible with common industrial Ethernet and fieldbus networks
- ▶ Quick, simple commissioning with a handheld keypad, NORDCON software, or bluetooth adapter and NORDCON mobile app
- ▶ Intralogistics options available



Power disconnects and control switches are located directly on the drives and enable direct starting and stopping as well as fast mode switching.

- ▶ AC line switch
- ▶ Selector switch for local or remote control
- ▶ Start / Stop and Forward / Reverse switch
- ▶ Energy-efficient



All interfaces are designed for ease of use for easy configuration and installation.

- ▶ Simple Plug-and-Play with all common connection plugs
- ▶ Plug-in supply cable and motor output
- ▶ Plug-in sensors and encoders
- ▶ Pre-assembled cables
- ▶ Integrated PLC at no extra cost

Complete drive solutions from a single source

In the early 1980's, NORD DRIVESYSTEMS developed the revolutionary UNICASE housing - an enclosed, single-piece housing that is produced from a single piece of material.

- ▶ Housing block integrates all bearing points
- ▶ High output torques
- ▶ High axial and radial load capacity
- ▶ Ultimate reliability
- ▶ Long service life
- ▶ Quiet operation

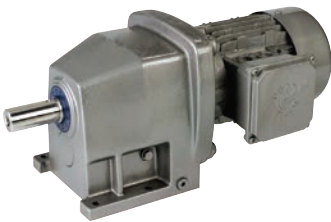
DuoDrive (Flyer S5010)



- ✓ Integrated gear unit and motor
- ✓ Extremely high system efficiency
- ✓ Compact, space saving design
- ✓ High power density

Sizes: 1
Power: 0.5 – 2 HP
Torque: Up to 700 lb-in
Ratio: 3.24:1 – 16.2:1

UNICASE™ helical gear units (Catalog G1000)



- ✓ Foot or flange mounted
- ✓ Long life, low maintenance
- ✓ Closely stepped ratios
- ✓ Cast-iron UNICASE housing

Size: 11
Power: 0.16 – 200 HP
Torque: Up to 205,000 lb-in
Ratio: 2.76:1 – 14,340.31:1

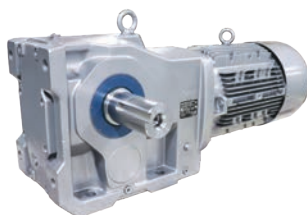
CLINCHER™ parallel shaft gear units (Catalog G1000)



- ✓ Foot, flange, or shaft mounted
- ✓ Hollow or solid shaft
- ✓ Compact design
- ✓ Cast-iron or aluminum UNICASE housing

Sizes: 15
Power: 0.16 – 200 HP
Torque: Up to 680,000 lb-in
Ratio: 4.03:1 – 15,685.03:1

UNICASE™ bevel gear units (Catalog G1000)



- ✓ Foot, flange, or shaft mounted
- ✓ Hollow or solid shaft
- ✓ Cast-iron UNICASE housing
- ✓ Closely-stepped ratios

Sizes: 11
Power: 0.16 – 200 HP
Torque: Up to 442,500 lb-in
Ratio: 8.04:1 – 13,432.68:1

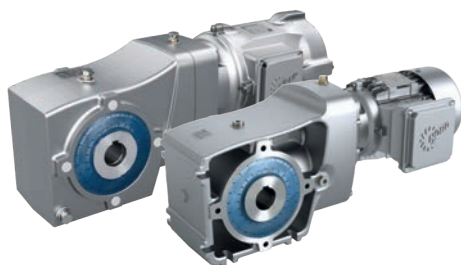
NORDBLOC.1® helical gear units (Catalog G1000)



- ✓ Foot or flange-mounted
- ✓ Die-cast iron or aluminum housing
- ✓ UNICASE housing
- ✓ Available in single, double, or triple reduction

Size: 16
 Power: 0.16 – 60 HP
 Torque: Up to 29,205 lb-in
 Ratio: 1.07:1 – 456.77:1

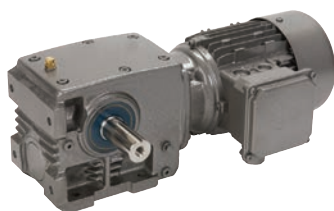
NORDBLOC.1® 2-stage bevel gear units (Catalog G1014)



- ✓ Foot, flange, or shaft mounted
- ✓ Hollow or solid shaft
- ✓ Aluminum housing
- ✓ Compact design

Sizes: 6
 Power: 0.16 – 10 HP
 Torque: Up to 5,800 lb-in
 Ratio: 3.03:1 – 70:1

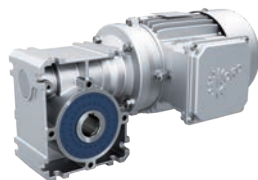
UNICASE™ worm gear units (Catalog G1000)



- ✓ Foot, flange, or shaft mounted
- ✓ Hollow or solid shaft
- ✓ Cast-iron or aluminum UNICASE housing
- ✓ Closely-stepped ratios

Size: 6
 Power: 0.16 – 20 HP
 Torque: Up to 27,350 lb-in
 Ratio: 4.40:1 – 7,095.12:1

FLEXBLOC® worm gear units (Catalog G1035)



- ✓ Modular aluminum housing
- ✓ Universal mounting design
- ✓ Life-long lubrication
- ✓ NEMA or IEC input versions

Sizes: 5
 Power: 0.16 – 5.0 HP
 Torque: Up to 4,683 lb-in
 Ratio: 5.00:1 – 3,000.00:1

UNIVERSAL SMI worm gear units (Catalog G1035)

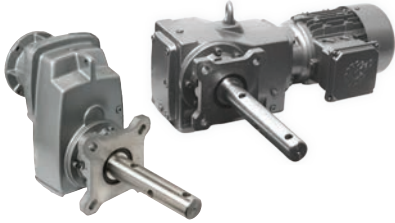


- ✓ Smooth surface aluminum housing
- ✓ Universal mounting design
- ✓ Life-long lubrication
- ✓ NEMA, IEC, or direct motor mount options

Size: 5
 Power: 0.16 – 5.0 HP
 Torque: Up to 4,683 lb-in
 Ratio: 5.00:1 – 3,000.00:1

Complete drive solutions from a single source

Screw conveyor package (Catalog G1129)



- ✓ Direct coupled input design
- ✓ Closely stepped ratios
- ✓ Standard CEMA mounting
- ✓ Compact and cost-effective

Sizes: 11
Power: 0.16 – 60 HP
Torque: Up to 53,100 lb-in
Ratio: 4.32:1 – 4,246.38:1

Overhead conveyors (Catalog G1043)



- ✓ High overhung load capacity
- ✓ QUADRILIP™ sealing system
- ✓ Low maintenance, long service life
- ✓ Industry standard mounting and shaft designs

Size: 3
Power: 0.33 – 60 HP
Torque: Up to 75,225 lb-in
Ratio: 8.10:1 – 3,735.92:1

Flexible input options

There are many available input options for our smallest gear boxes to our powerful MAXXDRIIVE units.

- ▶ NEMA
- ▶ IEC
- ▶ Integral gearmotors
- ▶ Solid input shafts
- ▶ Servo adapters
- ▶ Custom inputs

Cut-pinions

NORD offers precisely machined, single-piece pinions that do not require a separate gear to be pressed into the input shaft. This provides a number of benefits, including:

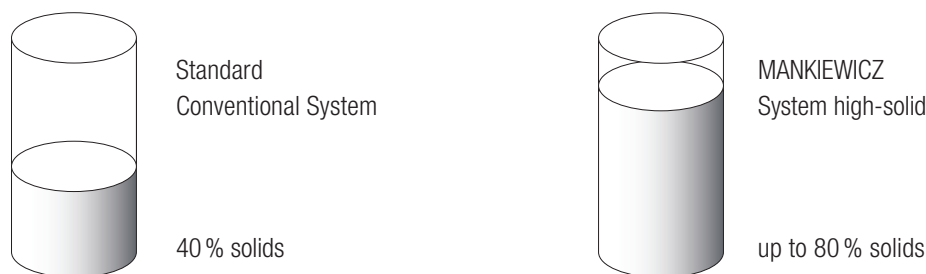
- ▶ High gear ratios per stage
- ▶ Smaller ratio steps
- ▶ More ratio options in each case size
- ▶ Various inputs available
 - ▶ NEMA adapters
 - ▶ IEC adapters
 - ▶ W-inputs



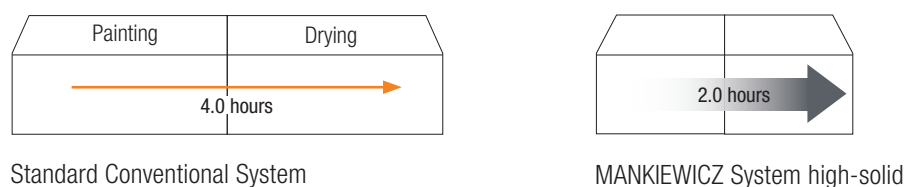
Surface protection

The paint systems used by NORD DRIVESYSTEMS® are resistant to chemicals and have been tested for their resistance to all common substances which could have a negative affect on the environment. Once fully dry, NORD® paints are food-safe and fulfil the NSF/ANSI 51-2009e test criteria. No further top coats are required. NORD®'s protective properties extend beyond paint coatings and surface treatments for its products. All NORD® motors and speed reducers are constructed to provide a high degree of protection against wet and severe conditions. A variety of standard and optional features are available to help your NORD® gear unit endure the harshest environmental conditions year after year.

Solvent reduction



Process optimization



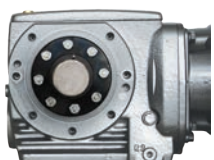
GRIPMAXX™

A keyless bushing system for shaft-mounting drives that can accommodate a wide range of solid shaft sizes while ensuring high-capacity, zero-backlash fit. Eliminates assembly and disassembly challenges by offering generous clearances for easy installation and removal of the gearbox.

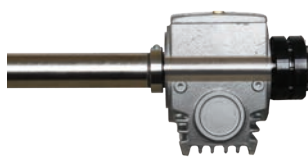
- ▶ Extensive bore flexibility*
- ▶ No special shaft tolerances: utilize readily available cold-finished shaft stock*
- ▶ Simplified install and removal
- ▶ Bushings are corrosion resistant
- ▶ Optimally designed for shaft mounted or torque arm mounted units
- ▶ Available with UNICASE helical bevels, two-stage bevels, UNICASE parallel shaft, and UNICASE helical worm units



**Shrink disc keyless bore offering available for non-stock bore sizes. Assembly tolerances require more precision than shafts connected with GRIPMAXX bushing kit.*



A shrink disc helps in the assembly or disassembly process



The GRIPMAXX fits tightly against a shouldered shaft



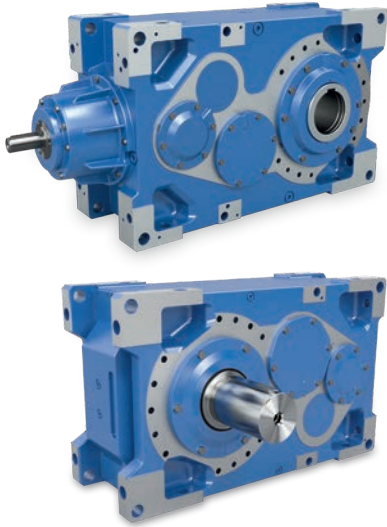
Easy installation and removal

Complete drive solutions from a single source

Torque up to 2,495,900 lb-in

NORD DRIVESYSTEMS is the only manufacturer which produces modular industrial gear units with an output torque of up to 2,495,900 lb-in in a one-piece UNICASE housing.

MAXXDRIVE® industrial gear units (Catalog G1050)



- ✓ All bearing points and sealing-surfaces are machined in a single operation
- ✓ No separating joints in the housing, no sealing surfaces subject to torque
- ✓ High-precision axis alignment for quiet operation
- ✓ Long life, low maintenance
- ✓ Gear ratio range 5.60 to 400:1 with the same footprint dimensions
- ✓ Parallel axis and right-angled gear units

Size: 11
Power: 2.5 – 8,075 HP
Torque: 132,800– 2,495,900 lb-in
Ratio: 5.60:1 – 30,000:1

Industrial gear unit modules

Highly-configurable components allow NORD to provide a wide variety of system variants as well as great flexibility and short planning and assembly times without the need for costly custom components. This modular concept also enables drive solutions to be individually tailored to your requirements with short delivery times, even for large gear units.

